

# Cut List Items Training

Cut List Items\_Training.zip



## Cut List Items -Overview

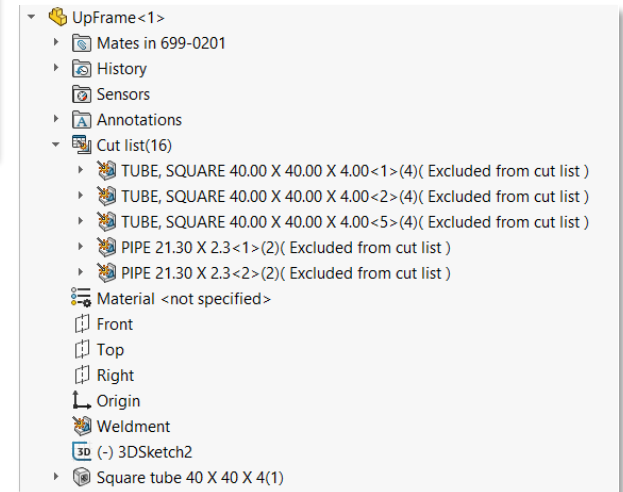
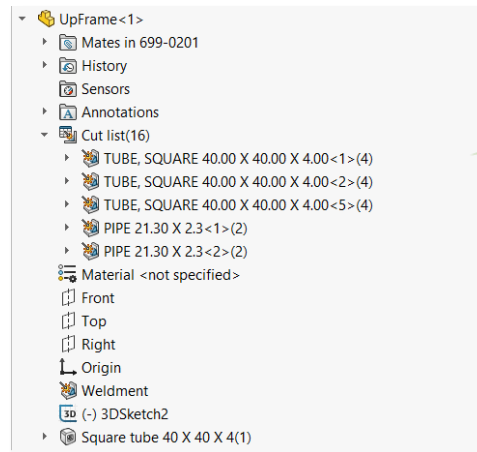
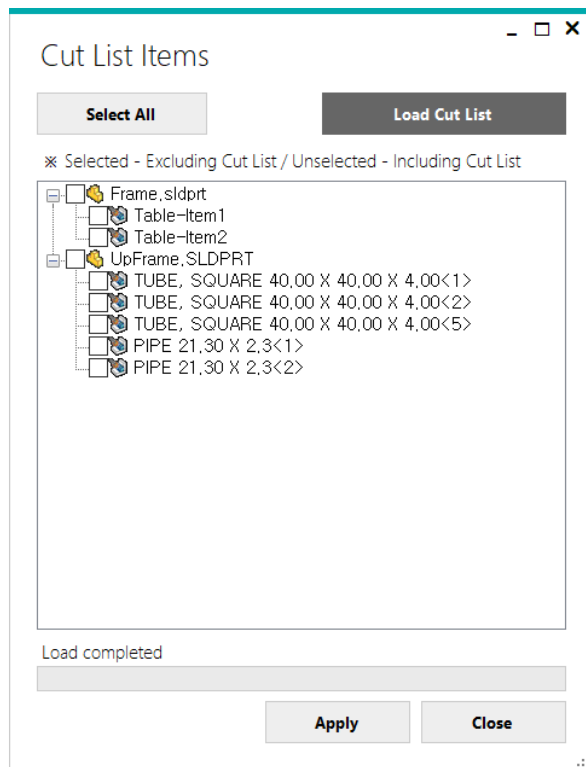
## Main Functions

- Exclude/Include cut list items with simple manipulation
- Edit cut list items in sub-assembly

## Benefits

- Reduce work time for managing each file in assembly
- When print out BOM, easily exclude unnecessary cut list item from list.
- Changes are applied to assembly/part/drawing at once.

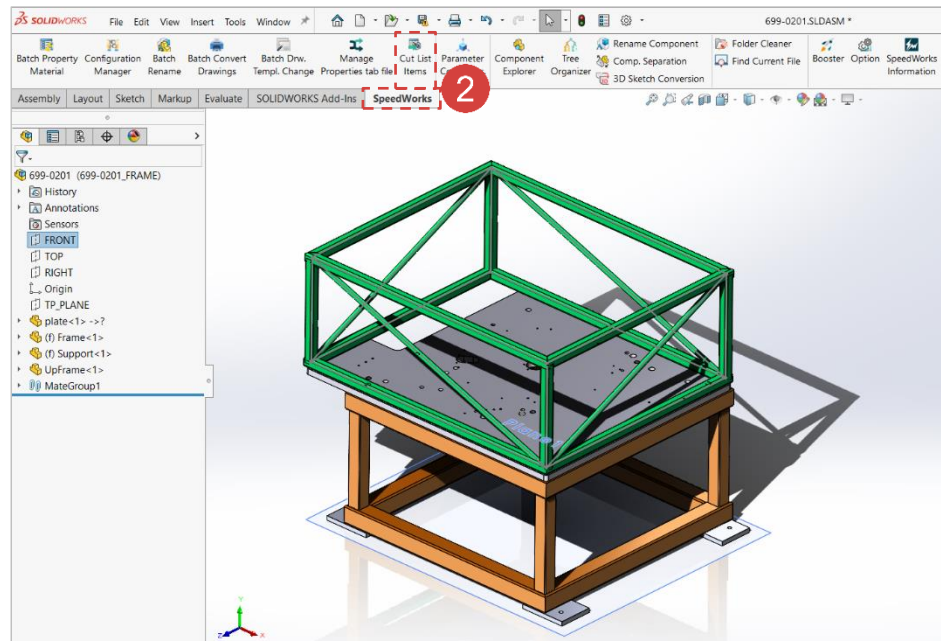
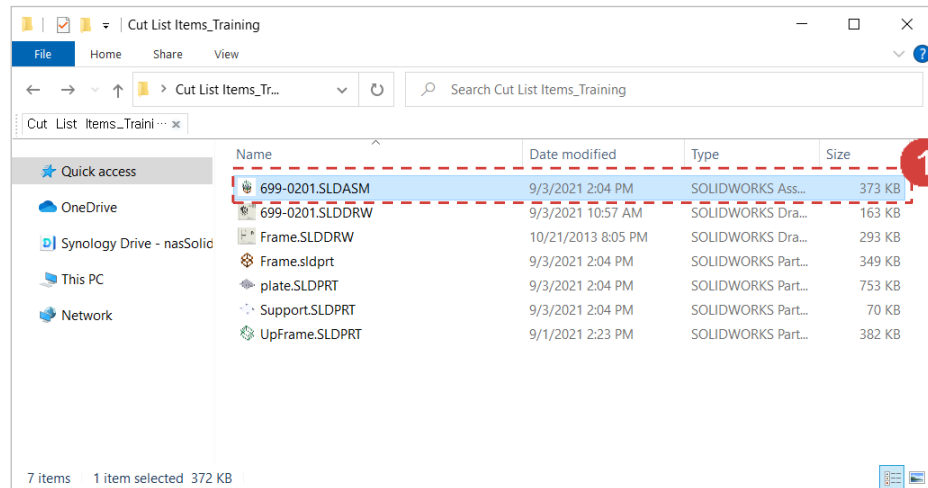
 **Course Objective: Follow the simple step-by-step instructions and learn how to use Cut List Items.**



## Cut List Items - Execute

Work on the part with the red circle (1) following instructions by yourself.  
The part with the black square (1) is an additional explanation or a reference.

- 1 Open 699-0201.SLDASM file.
- 2 Click [SpeedWorks]tab-[Cut List Items] button to execute.

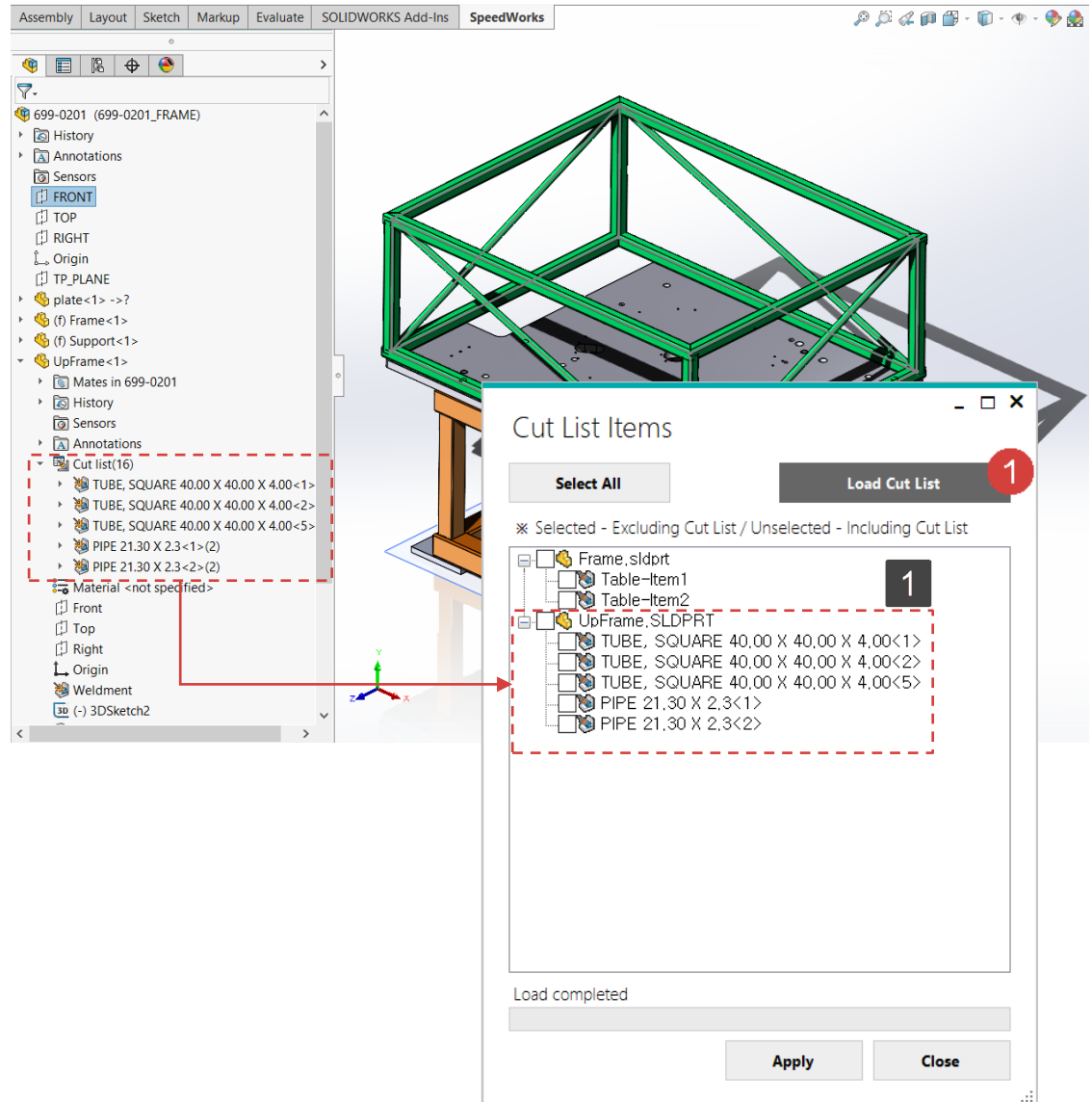


※ You can download example files at Support page in SpeedWorks Homepage(<http://speedworks.info>).

## Cut List Items - Load

1 By clicking **[Load Cut List]** button, load cut list items from currently opened assembly.

1 This is the list of BOM existing in the drawing of the **699-0201.SLDASM** file in the template file.



Work on the part with the red circle (1) following instructions by yourself.  
The part with the black square (1) is an additional explanation or a reference.

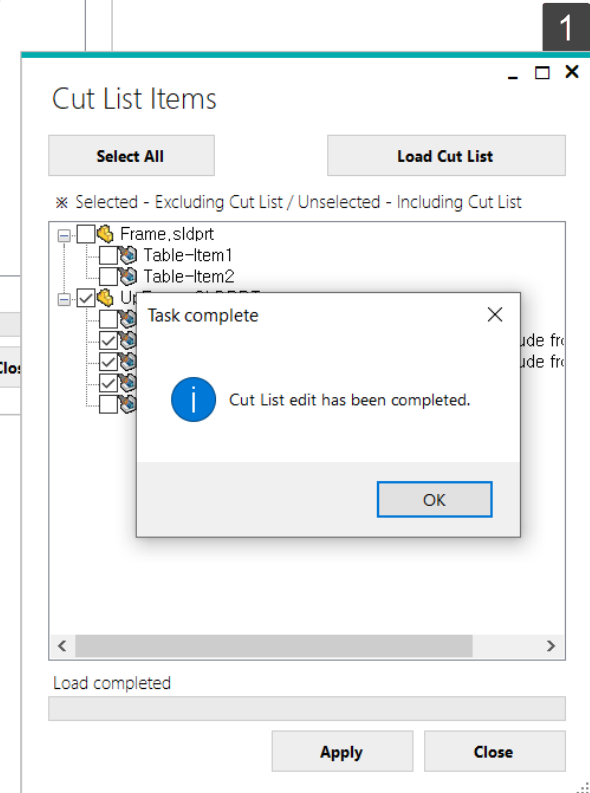
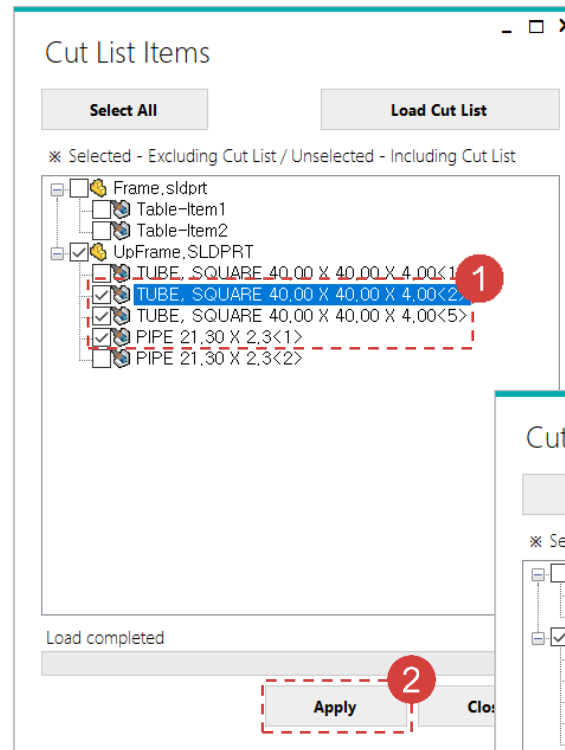
## Cut List Items - Edit Cut List

Work on the part with the red circle (1) following instructions by yourself.  
The part with the black square (1) is an additional explanation or a reference.

1 Check **TUBE, SQUARE 40.00 X 40.00 X 4.00<2>,<5>** to **exclude from cut list**.

2 Click **[Apply]** button to apply changes into model.

1 If it is successfully done, the following window is displayed. Close window to click **[OK]** button.

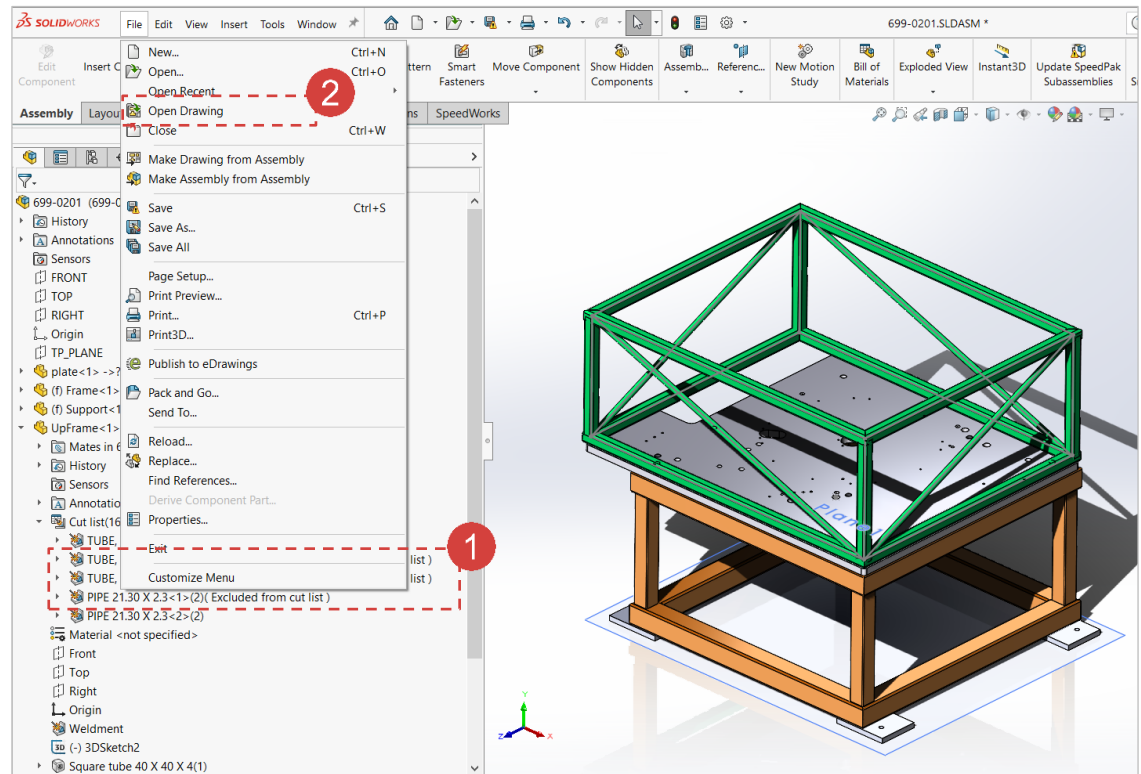


## Cut List Items - Check result

Work on the part with the red circle (1) following instructions by yourself.  
The part with the black square (1) is an additional explanation or a reference.

1 Check "(Excluded from cut list)" are attached after selecting the components in FeatureManager in SOLIDWORKS.

2 Click [File] - [Open Drawing] button to open assembly drawing file.



## Cut List Items - Check Drawing Result

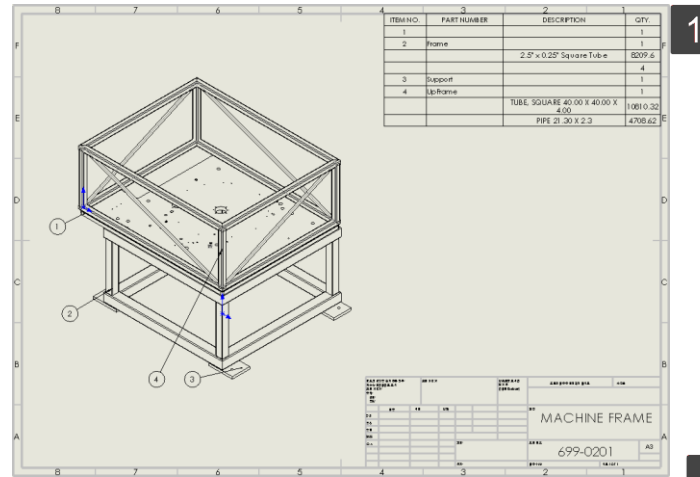
Work on the part with the red circle (1) following instructions by yourself.  
The part with the black square (1) is an additional explanation or a reference.

1 The selected cut list items are excluded from list, changed value are also applied into drawing.

1 It is drawing of sample file.

2 This is **the initial** cut list table under magnification.

3 The selected cut list items are excluded in the table.



ITEM NO.	PART NUMBER	DESCRIPTION	QTY.
1			1
2	Frame		1
		2.5" x 0.25" Square Tube	8209.6
			4
3	Support		1
4	UpFrame		1
		TUBE, SQUARE 40.00 X 40.00 X 4.00	10810.32
		PIPE 21.30 X 2.3	4708.62

ITEM NO.	PART NUMBER	DESCRIPTION	QTY.
1			1
2	Frame		1
		2.5" x 0.25" Square Tube	8209.6
			4
3	Support		1
4	UpFrame		1
		TUBE, SQUARE 40.00 X 40.00 X 4.00	4960
		PIPE 21.30 X 2.3	2558.02